

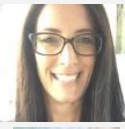
Term 1 Teacher Only Days:
12 March and 16 April
 (School will be closed to students on these days)

From the Principal...

A warm welcome to new families who have moved into the area and new students who join us this year, there was a real buzz this morning with our families and students arriving.

I would like to extend an invitation to our new families to attend our school welcoming powhiri next Tuesday 9th February at 10.15-11.00am.

We welcome new staff who join our Conifer Grove whanau this year:



Laura Choat
 (Rm 9 &
 Year 7&8 Leader)



Chareza Fourie
 (Rm 15)



Jenny Oh
 (Rm 11)



Shaaman Singh
 (Rm 13)



Kiana David
 (Rm 8)

This year we continue our journey as a school in developing our School Curriculum, staff will be involved in professional development during the term, please make note of upcoming dates for Teacher Only Days during Term 1.

Over the holiday break we have school property projects being undertaken - Admin block repaint, Room 1-6 block refurbishment, and the construction of a shade cover over the Room 9-12 court area. We look forward to the completion of these projects in the coming weeks.



During the Room 1-6 block refurbishment - Room 4 will be located in the Art Room (by Room 17) and Rooms 2 & 3 classes will be located in the prefab buildings (next to Room 10).

Health & Safety

This morning traffic was very congested at the front gate on Evanda Cres and this is causing safety concerns, whilst we encourage and welcome our whanau to our school, we also encourage our students to walk to school if they live close by. If you live further out you may wish to drop your children off further down the road from the school and encourage them to walk from there.

Please ensure your child is sun safe and brings their school hat each day to wear when outside and a drink to stay hydrated during this warm weather.

Enjoy your long weekend!

Ngā mihi nui, Raj Dullabh, Principal



Communication to Caregivers

Our newsletter is sent out fortnightly, today we have also given you a printed newsletter, in future we will communicate with our Caregivers electronically via email using our system called HERO, this is sent to the email address provided to us on enrolment, if you are not receiving these please click **HERO** and this will redirect you to the parent setup or contact the school office. Printed copies can be collected at the office. All notices and newsletters notifications are also sent via the SKOOL LOOP APP (Download our SKOOL LOOP app (see details on Page 2) or Email us: admin@cgschool.ac.nz and we can help set you up to ensure you receive our notifications.

2021 Dates to Note

8 Feb	Waitangi Day Observed - school closed
9 Feb	Powhiri Assembly 10.15am
25 Feb	Family Fun Night
12 March	Teacher Only Day - school closed
2-6 April	Easter Break - school closed
15 April	Term 1 ends
16 April	Teacher Only Day - school closed
Term 2	3 May - 10 July
Term 3	26 July - 1 Oct
Term 4	18 October - 16 December

2021 School Bell Times	
8.45am	Students expected at school
9.00am	School Starts
9-11.00am	Learning Block 1
11.00-11.45am	Break 1
11.45-1.15pm	Learning Block 2
1.15-2.00pm	Break 2
2.00-3.00pm	Learning Block 3
3.00pm	School Finishes

Health & Safety Reminders

All school gates are closed at 9.05am – all students coming in after 9am must sign in at the office. All visitors during the day must report to the school office using the Evanda Cres entrance. Lunches / other items for students to be dropped at the school office please, not the classroom. Gates will be opened at 2.50pm for parents coming on site to collect students at the end of the day. Students are not permitted to leave the school unaccompanied during the school day for appointments.

A sunhat must be worn when outside, students without sun hats will play under shade areas. We are a **water only school** please. No juice, fizzy or sport drinks.

The disability car park is situated outside the Evanda Cres pedestrian entrance, this is strictly for people with disability permits only to use.

Parking is limited around the Evanda Cres entrance – please take extra care or consider walking or dropping students off at the walkways which lead to the school.

Absences – if your child is going to be absent from school please contact the school office via email, phone message, skool loop APP, if unreported a text message will be sent to caregivers asking you to contact school.

Community Notices

Conifer Grove Netball club Junior netball trials are being held at Pulman Indoor Arena, Walters Road, Papakura on the following dates:

Tuesday 9 February 5.30pm – Intermediate (Yr 7 & 8)
 Wednesday 10 February 5.30pm – Yr 5 & 6

At Conifer Grove School (no game trials)
 on Thursday 11 February 3.15 to 4.30 – Yr 1-4
 Registration muster will be held.

To register go to:

[Conifer Grove Netball Club - Tab 1 \(sporty.co.nz\)](https://www.sporty.co.nz)

We are looking for coaches for the Intermediate and college grades. For information on other grades see Conifer Grove Netball Club Facebook page
 For enquiries contact Jill Collins on 0274547868

- ✓ Events
- ✓ Notices
- ✓ Instant school messages
- ✓ Book interviews
- ✓ Absentee
- ✓ Newsletters
- ✓ Permission Slips



Simple free download: In Google play & App Store search 'Skool Loop' & choose our school once installed.

PLEASE SUPPORT OUR ADVERTISERS WHO ARE SUPPORTING OUR SCHOOL



OUT OF SCHOOL CARE

CONIFER GROVE SCHOOL

We offer *quality care in a fun, safe, caring and stimulating environment for your children.*

Morning, After School Care & Holiday Programmes

MSD Social Sector Level 3 accreditation.

WINZ subsidies available to eligible families.

Enquires to Trish Le Prou - Owner Ph 027 518 0077

Email alecas@extra.co.nz

Or pop over and visit our friendly staff at The School Hall



Need a
vet?



365 GREAT SOUTH RD, PAPAOKURA, 09 298 8575
UNIT A1, 75 HINGAIA RD, KARAKA, 09 298 7043



Conifer Grove
Kindergarten

70 Walter Stevens Dr, Takaruna

Ph. 299 7941

conifer@comka.org.nz

Enrol your child for a quality pre-school experience

- No Zoning
- Government Licensed Centre
- Qualified Early Childhood Teachers
- up to 20 hours free for 3-5 year olds (conditions apply)
- WINZ Subsidies Welcome

Please come in & meet us
Open Longer Hours - New enrolments welcome

PAPAKURA
FLOORING >< TRA

RICHARD & TRISH WICKETT

Locally owned and operated, we're Papakura's XPERTS on flooring!

Visit us in store:

20 ELLIOT STREET, PAPAOKURA

Phone: 09 298 9348

Email: papakura@flooringtra.co.nz

WE OFFER:

1. INTEREST FREE FINANCE

2. FREE MEASURE & QUOTE

3. FULL INSTALLATION SERVICE

4. PROFESSIONAL & NZ QUALIFIED INSTALLERS

AUCKLAND SOUTH
CHIROPRACTIC



Unit 11 and 12, Conifer Grove Bridge
off Walter Stevens Drive,
Conifer Grove,
Takaruna, Auckland

Focus on kids. Are you sick and tired of your kids being sick and tired? Let us help you get your kids looking, feeling, and moving better.

(Our mission is to help our young kids reach their full potential as possible!)

School kids will receive a free spinal exam & reflex check.

Call Tania on 298 9012 to book your appointment time.
reception@backmagicchiro.co.nz • www.backmagicchiro.co.nz

KUMON

KUMON MANUREWA
EDUCATION CENTRE

Maths/English Tuitions

Contact - Manasi

021 072 6775

MM
MillenniumMusic
Otahuhu/ Manurewa
Singing Lessons
Piano/Guitar Lessons

Ph: 266 7270

www.millenniummusic.co.nz

CoolAwnings



Our products include:

• Fixed and retractable awnings • Outdoor blinds • Shade sails

FreePhone
0800 100 266

Check out our showroom:
Open Monday to Friday 9.30am to 6.00pm
Saturday 10.00am to 1.00pm

6 Merrin Road, Pomare, Auckland • P. 09 570 6353
awnings@coolawnings.co.nz • www.coolawnings.co.nz

WICKED BIKES AT WICKED PRICES

Scooters and e-bikes for your RV or camper van, commuter bikes, foldable bikes for holidays and trails

Prices from \$1545-\$2285 inc GST

Non e-bike assembly and tune up services also available



www.wickedwheels.co.nz Ph 027 269 3539

Located in Regard Terrace, Conifer Grove

CG[®]
Conifer Groves
Medical Centre

Your local GP practice

- conveniently located in Takaruna
- Low fees
- New enrolments welcome

It can be much harder to get preventative care and advice when you are not enrolled in one single practice and this is why it's important to enrol with a general practice. You will have a team who know you, who have your full medical records available and who are ready to help you. You can chat with us today. Go to our website and click on the enrolment link, or phone us and we will send you the necessary forms.

Ph 09 2980238 • E cgmc@cgmc.co.nz • W www.cgmc.co.nz

138 Great South Road, Takaruna (on the GP site between Manurewa Road and Taka Street)

Thursdays
after school
at Stratford School

Pform
.nz

www.pform.nz

0800 736 766

Dance • Drama • Singing

Ask us about our Conifer Grove special offer

Rachael Collier & Gagan Dhillon

027 477 7909

rachael@livejournal.com

021 404 7794

gagan@livejournal.com

LIVE
&
LOVE
SUPPORT
Local

To advertise on this newsletter and support the school, please contact Newsletters Unlimited, Ph/Fax: 09 817 3667, or Email: newsletters@extra.co.nz