

### From the Principal...

Kia ora Whānau & Happy Diwali,

**8 Dec Teacher only day - school closed**

**A big thank you to our PTA** who held their last event (Halloween Disco see page 4) this year. Nicky and her committee have worked tirelessly over the past few years to ensure our families could enjoy events such as galas, discos etc and in the process raising funds for our students to enjoy new playgrounds, equipment, camps.

**Whanau Naming Assembly** - in week 1 of this term we gifted our ākonga (students) with the official names of our whanau groups, what a special occasion it was! Our whānau names are proudly displayed as you enter our kura (school). Our Kapa Haka students have performed today and enjoyed other performances at the Rangatahi Festival at Mangapikopiko School, Papakura.



**Planning for 2024** is underway please assist us with our planning by completing these forms below if you have:

- 1) A new entrant child due to start school in 2024 - [FORM LINK](#)
- 2) A child leaving our school at the end of 2023 [FORM LINK](#)

**Community Consultation** - Thank you to families who took the time to give feedback. The Board of Trustees and the Senior Management at Conifer Grove School appreciates your feedback which is important in shaping the direction of the school in the next 2 years. Congratulations to our winners of the Songbird Cafe vouchers Sarah E., Cayce H., Jas M., and Gagan S.

**School Athletics Day** - our Athletics Day is coming up in week 7 this term. We welcome all parents who can come to support your tamariki and the school. We look forward to the fierce Whanau Group competition.

**Gates and Road Safety** - If you are parking your vehicle when dropping off or collecting your child from school, please ensure that you park in a safe place, please do not double park, park over a driveway, park on yellow lines, please do not encourage children to run across to meet you. Also be aware, that Auckland Transport officers come regularly to monitor vehicle parking and issue fines.

Have a great week everyone!

*Ngā mihi nui, Raj Dullabh, Principal*



### STUDENT OF THE MONTH Timata & Whanake – October 2023

Congratulations to the following students who display an outstanding attitude and work ethic and for always following our school values.

Ara Tuapapa	<b>Lachlan G.</b>	Room 4	<b>Reshika N.</b>	Room 19	<b>Elina P.</b>
Room 1	<b>Sasha A.</b>	Room 16	<b>Natalie L.</b>	Room 20	<b>Jemaima W.</b>
Room 2	<b>Ayan M.</b>	Room 17	<b>Scarlett M.</b>	Room 21	<b>Rajveer S.</b>
Room 3	<b>Casper G.</b>	Room 18	<b>Ananayan G.</b>	Room 22	<b>Kainjel S.</b>
<b>Keep up the great work!</b>				Room 23	<b>Darren L.</b>

### PRINCIPAL'S AWARDS October 2023

**Muhammad A., Hafsa O.**  
**Eliyana M., Jacob T., Willa M.,**  
**Ruby W., Tiara W., Manu M.,**  
**Tyler O., Nathan D., Praniit K.,**  
**Jackson B., Agnes M., Felix W.,**  
**Eknor K.-J., Hosea L.**

**Thank you for displaying our school values consistently!**

**Juicies Ice blocks**  
on sale tomorrow (Friday 3 Nov -  
at 2nd break) **\$2 coin** please

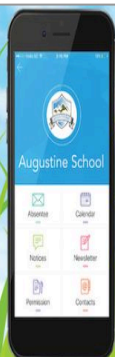
## 2023 DATES TO NOTE

6 - 8 Nov	Whanake WERO Trips
13 Nov	New Entrant Intake
14 Nov	Year 7-8 Athletics
15 Nov	Whanake Camp Parent Info Evening 6pm in the Hall
16 Nov	Year 5-6 Athletics
22 Nov	Weetbix Tryathlon
23 Nov	Whole School Athletics
28 Nov	Kapa Haka Awards Evening
30 Nov	Whanake Overnight Stay
4 Dec	Rosehill College Orientation Day
7 Dec	Year 8 Honours Board Assembly
8 Dec	Teacher only day - school closed
13 Dec	Year 4-8 Celebration Assemblies
14 Dec	Year 0-3 Celebration Assemblies Year 8 trip
15 Dec	Final Assembly Term 4 Ends <b>at 12:30pm</b>

## 2024 TERM DATES

Term 1	7 February - 12 April
Term 2	29 April - 5 July
Term 3	22 July - 27 September
Term 4	14 October - 20 December

- ✓ Events
- ✓ Notices
- ✓ Instant school messages
- ✓ Absentee
- ✓ Newsletters
- ✓ Permission slips



**Have you downloaded our School app yet?**  
**Never miss important school information again!**

November 2023 Page 2

### Juicies Ice blocks

on sale tomorrow (Friday 3 Nov - at 2nd break) **\$2 coin** please



### Breakfast Club

Every day, all welcome  
 8:30-8.50am Hot drink / weetbix  
 at 1st break sandwich / fruit



**in Whare Manaaki Room**

**Any donations of fruit etc gratefully accepted**

### Sun Safety Reminders

- HATS / CAPS will need to be worn in Term 1 & Term 4 when students are outside - children without school hats will need to play under shaded areas at break times.

#### Red Bucket Hat

Year 0 - 6 \$15

#### Green

School Cap \$12

Year 7 & 8 only



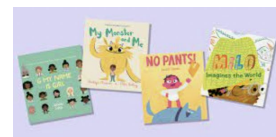
**Hats/Caps can be purchased at the Warehouse.**

- We encourage students to protect themselves with broad spectrum sunscreen of at least SPF30 (Sun Protection Factor), and making use of shade areas whenever possible.

### Family Lending Library

Every Wednesday afternoon  
 3-4pm

View books and choose up to six books to borrow from the Knowledge Centre.  
 If you are interested - visit the Knowledge Centre.



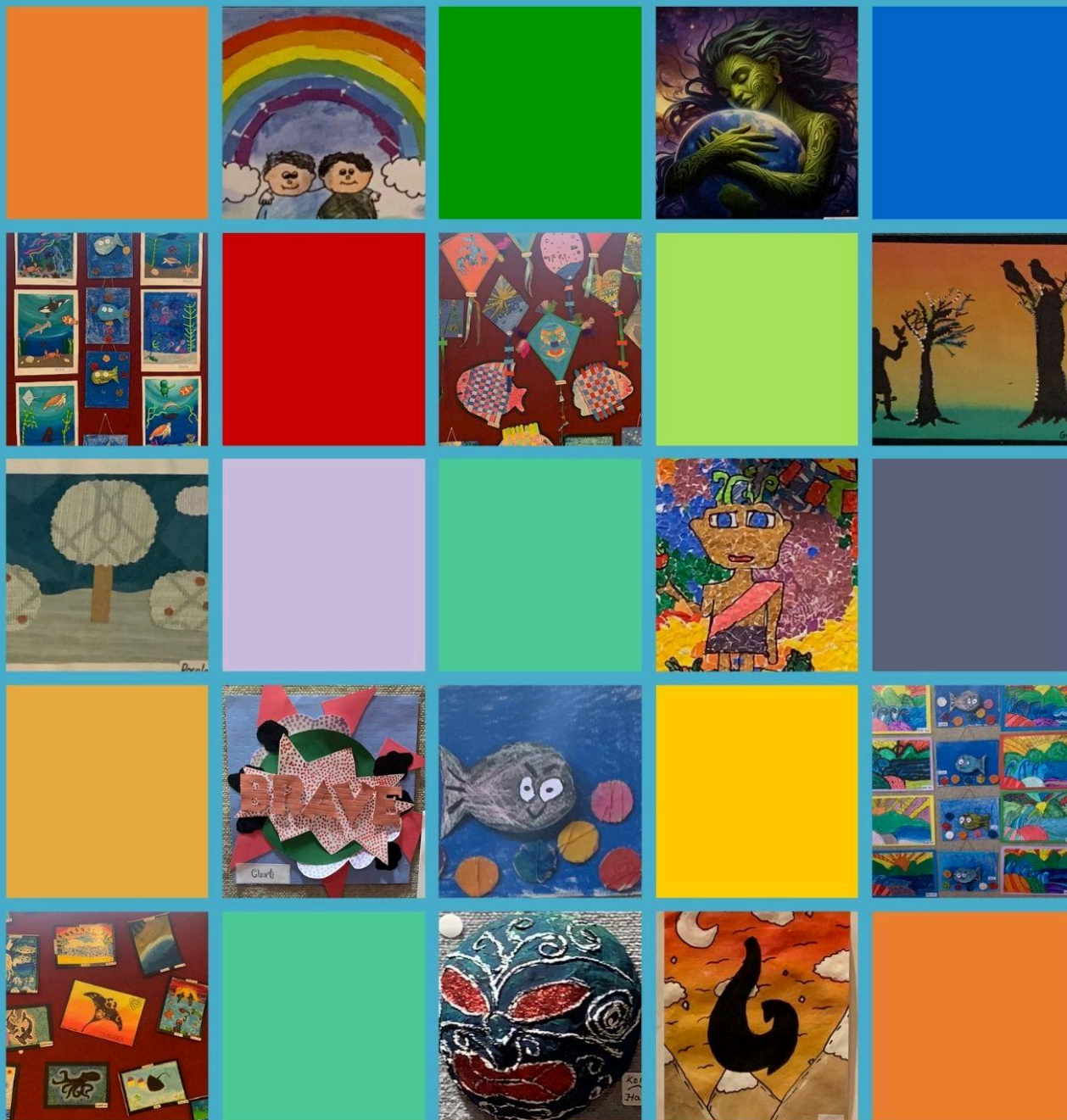
Simple free download:

In Google Play and App Store search 'Skool Loop' and choose our school once installed.





# Conifer Grove School ART EXHIBITION



LAST TERM, STUDENTS WERE BUSY LEARNING HOW PEOPLE INNOVATE TO TELL THE STORIES OF THEIR PAST THROUGH VISUAL ART. AS PART OF THIS LEARNING, STUDENTS HAVE BEEN LEARNING ABOUT THE CHARACTERISTICS AND DUALITIES OF THE MĀORI ATUA AND HAVE PRESENTED THEIR UNDERSTANDING THROUGH A RANGE OF DIFFERENT ART WORKS, UTILISING A RANGE OF VISUAL ART SKILLS AND TECHNIQUES. IF YOU MISSED THE AWESOME DISPLAY IN THE HALL DURING WEEK 2, WE WILL HAVE SOME PIECES ON DISPLAY IN THE ADMIN FOYER FROM NEXT WEEK.

### From the PTA Chairperson...

A huge turnout of 305 kids + their family enjoyed the Halloween Disco last Friday.

It was a hard decision to pick the best costumes and best dance moves but we had a great selection of winners for this as well as 6 lucky door prize winners.

Thank you to everyone who helped make this a fantastic event – PTA, Teachers, Parents and locals who helped with the sounds system and playlists.

A massive shout out to our fantastic sponsors:

Rovi Varma – Harvey's Real Estate

Heather Obern and Kevin Arthur – Ray White Manukau

Team Gagan & Rachael – Ray White Takanini

The funds raised by the school Disco will go towards the Whanake camp and some previously committed projects.

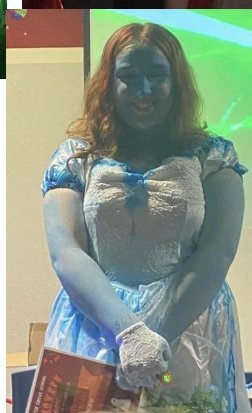
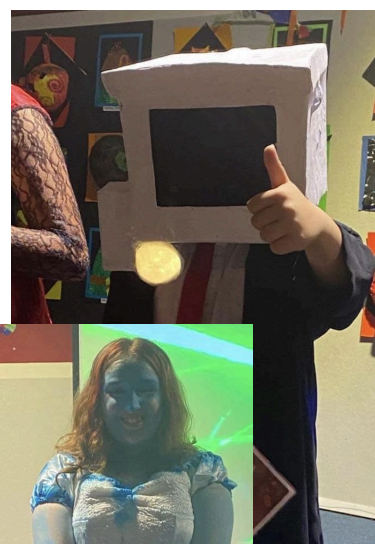
This was the last event organised by the PTA which has now been disbanded.

I would like to thank not only the most recent PTA committee but all the previous members and helpers over the years who have helped to deliver so many fantastic events and fundraising efforts for the school.

Together we have funded a lot of amazing projects big and small – a few include: Junior playground, school camps, Kapahaka uniforms, sports trips, rubberised court upgrade, new entrant playground, Learning programmes for Timata, Lego learning tools + so much more.

The PTA will continue to support the school and our amazing teachers where we can and we encourage all other parents to reach out and support the school – there are many opportunities to get involved with your child's school life.

Nicky Remkes, PTA Chairperson





RayWhite



## Team Gagan & Rachael

Your Conifer Grove specialists

021 424 734 gagan.dhillon@raywhite.com

City South Investments 2019 Limited - Licensed REAA 2008, 212 Great South Rd, Takanini

LIVE  
LOVE  
SUPPORT  
Local



## Conifer Grove Kindergarten

Your local Kindergarten, for 2 - 5 year olds providing 20 ECE hours free for 3 - 5 year olds!

Qualified Early Childhood Teachers providing excellence in education.

Session options between 8.00am - 5.00pm including during the school holidays.



CONTACT US TODAY 09 299 7941 | [www.cmka.org.nz](http://www.cmka.org.nz)

## WICKED BIKES AT WICKED PRICES

Scooters and e-bikes for your RV or camper van, commuter bikes, foldable bikes for holidays and trails

Prices from \$2150-\$3990 inc GST



[www.wickedwheels.co.nz](http://www.wickedwheels.co.nz) Ph 027 269 3539

Located in Reynard Terrace, Conifer Grove

## Dr Anae Neru Leavasa

MP for Takanini

If you require advocacy, information or support please contact me

Takanini Office

[takanini.mp@parliament.govt.nz](mailto:takanini.mp@parliament.govt.nz) | 0800 997 527

317 Great South Road, Takanini 2112

📞 /DrAnaeNeruLeavasa

Authorised by Dr Anae Neru Leavasa MP, Parliament Buildings, Wellington



Labour



Great Times

OUT OF SCHOOL CARE

## Conifer Grove School

We offer quality care in a fun, safe, caring and stimulating environment for your children.

Morning, After School Care & Holiday Programmes

MSD Social Sector Level 3 accreditation.

WINZ subsidies available to eligible families.

Enquires to Trish Le Prou, Owner

M 027 518 0077 / E [admin@greattimes.nz](mailto:admin@greattimes.nz)

or pop over and visit our friendly staff at the school hall



FRANKLINvets

Need a  
vet  
for your pet?



PAPAKURA 09 298 6994 KARAKA 09 298 7043



Our products include:

- Fixed and retractable awnings
- Outdoor blinds • Shade sails

Freephone: 0800 100 266

Checkout our showroom

Open Monday to Friday 8.30am to 5.00pm

Saturday 10.00am to 1.00pm



6 Morrin Road, Panmure, Auckland

P: 09 570 6353

E: [customerservice@coolawnings.co.nz](mailto:customerservice@coolawnings.co.nz) W: [www.coolawnings.co.nz](http://www.coolawnings.co.nz)



CONNI-FER  
GROVE

HAIR & BEAUTY SALON

Come in and meet the ladies at Conni-fer Grove salon. We are here to meet all of your hair and beauty requirements. Our staff have a great passion for hair and beauty, for all ages. Call in for an appointment and specials every month.

OPENING HOURS  
TUESDAY: 9AM-5PM  
WEDNESDAY: 9AM-5PM  
THURSDAY: 9AM-LATE  
FRIDAY: 9AM-6PM  
SATURDAY: 9AM-3PM  
SUNDAY/MONDAY: CLOSED

09 2993988

[www.connifergrovesalon.com](http://www.connifergrovesalon.com)

PAPAKURA  
FLOORING XTRA

RICHARD & TRISH WICKETT

Locally owned and operated, we're Papakura's XPERTS on flooring!

Visit us in store:

20 ELLIOT STREET, PAPAKURA

Phone: 09 296 0340

Email: [papakura@flooringxtra.co.nz](mailto:papakura@flooringxtra.co.nz)

WE OFFER:

X INTEREST FREE FINANCE

X FREE MEASURE & QUOTE

X FULL INSTALLATION SERVICE

X PROFESSIONAL & NZ QUALIFIED INSTALLERS